

*Official Program
of
Dedication Ceremonies*

GREERS FERRY DAM

A project of the U. S. Army, Corps of Engineers

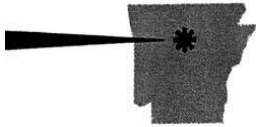
Heber Springs, Arkansas

October 3, 1963

DEDICATORY ADDRESS BY

John F. Kennedy

President of the United States



Greers Ferry Dam and Reservoir is the fifth of nine Congressionally-approved projects constructed by the U. S. Army Corps of Engineers in the comprehensive plan for development of the White River basin in Arkansas and Missouri. Construction of the \$46.7 million-dollar project was started in 1957. Designed primarily for flood control and generation of hydroelectric power, the project affords almost limitless opportunities for recreation usually associated with large bodies of water.

The dam is on Little Red River, a tributary of the White, about three miles northeast of Heber Springs, Arkansas. A concrete structure, 1,704 feet long and 243 feet high, the dam forms a reservoir nearly 50 miles long and contains a powerhouse with two hydroelectric generators of 48,000-kilowatt capacity each.

The lake covers 31,500 acres at nominal level, has a shoreline of 285 miles, and is the second largest lake wholly within the State of Arkansas. It is rapidly becoming one of the outstanding recreation areas of the many which attract millions of tourists and vacationists to the Ozarks of Arkansas, "The Land of Opportunity."

The project will regulate flow of the Little Red River for the 79 miles downstream to its confluence with the White River and prevent flooding on farm and urban land. It will assist in lessening high waters on the Lower White and Mississippi Rivers. Average annual power production from the plant, which will go into operation early in 1964, will be 189 million kilowatt-hours.

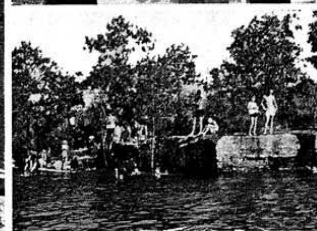
To accommodate the increasing number of visitors, the Corps of Engineers has set aside 15 shoreline areas, 12 of which are to be developed immediately and three in the future, to provide facilities for public use of the lake. Commercial boat docks, operated by concessionaires, will furnish boat and motor services. Free launching facilities, picnic and camping grounds, drinking water, and sanitary facilities will be available at points on the lake within easy access from the main highways.

A state park will be located near the western end of the reservoir by the Arkansas Publicity and Parks Commission while the City of Heber Springs has established a city park on the reservoir.

Heber Springs and Cleburne County, of which it is the county seat, long have been known as a recreation and resort area. The town was established more than 100 years ago and was centered around seven springs of varying mineral content which were deeded to the city to be perpetually free. Cleburne County is the "youngest" county in the State of Arkansas, having been formed in 1883, the last of the 75 counties to be established. As the most recently established, Cleburne County still claims its "youthfulness."

With the formation of Greers Ferry Lake, the city and county have assumed leading roles in the development of the area. An economic surge has been noted through establishment and construction of new business houses, new homes, schools, resorts, and facilities for visitors. Advantage has been taken of the rolling countryside to develop many new home-site and retirement relocation areas. The business outlook of the community, which was up during the construction of the project, is considered still favorable.

(Left to right) T. S. Cook, Resident Engineer, Construction; Col. Charles D. Maynard, District Engineer; Carl Gurner, Resident Engineer, Operation and Maintenance.



SCHEDULE OF EVENTS

(Subject to Change)

- 0830 ——— Entertainment at band stand—bands, talent show, etc.
- 1030 ——— Arrival of President by helicopter—welcome by committee.
- 1040 ——— Motorcade depart for dedication site.
- 1045 ——— Arrive dedication site—Hail to Chief and Ruffles and Flourishes
106th Army Band (Arkansas National Guard).
President views exhibits—remainder of motorcade party to platform.

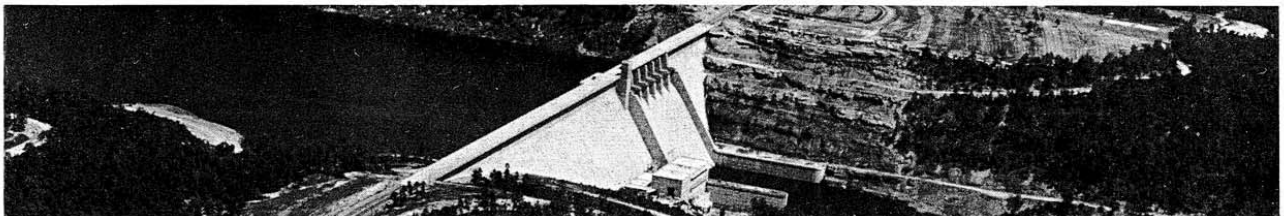
DEDICATION PROGRAM

- 1100 ——— President mounts platform—Star Spangled Banner—University of Arkansas Schola Cantorum and University "Marching 100" Band.
Presentation of Colors—172d Engineer Field Maintenance Company (ANG).
- 1105 ——— Call to order by temporary presiding officer.
- 1106 ——— Invocation by local minister.
- 1109 ——— Introduction of Honorable Wilbur D. Mills, Master of Ceremonies.
- 1110 ——— Introduction of Honorable Orval E. Faubus, Governor of Arkansas.
- 1111 ——— Welcome by Governor Faubus.
- 1115 ——— Recognition of platform guests only by name and title.
- 1130 ——— Introduction of President by Honorable John L. McClellan.
- 1131 ——— Address by president.
- 1205 ——— Conclusion of program—announcement of luncheon.
Benediction by local minister.

End of Dedication

- 1205 ——— Informal reception for President (platform guests and wives only)
- 1225 ——— Depart for luncheon tent, walking through spectator area.
- 1230 ——— Arrive luncheon tent—lunch—entertainment at band stand—no speeches.
- 1300 ——— Motorcade forms—individuals enter cars.
- 1305 ——— Motorcade departs for tour through public-use area.
- 1330 ——— Arrive landing area—goodbyes.
- 1345 ——— President departs by helicopter.

Program arranged by Heber Springs Chamber of Commerce. Photographs by Corps of Engineers and Arkansas Air National Guard.





An Opportunity and a Challenge...

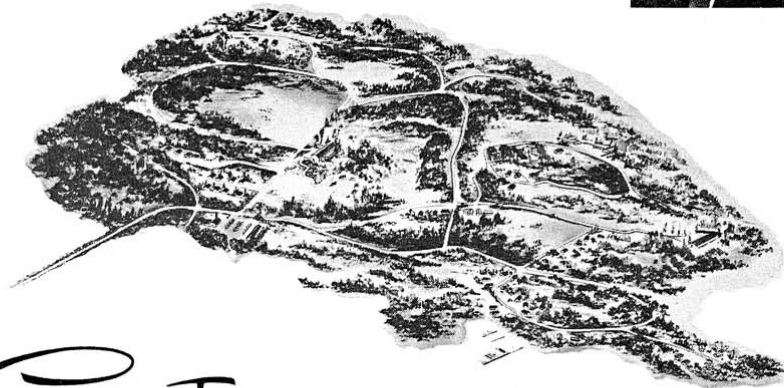
The completion of Greers Ferry Dam brings nationwide attention to this locale so richly endowed with natural beauty. Long appreciated by native Arkansans, this area will attract visitors and residents from all parts of the land as its unique advantages of climate, scenic terrain, and virtually unlimited recreational features are publicized.

By setting and maintaining high standards in all development projects in the Greers Ferry area, we can heighten and protect its great potential wealth for the economic betterment of the people of Arkansas. This resource is directly parallel to that of mineral, timber, agricultural, or industrial—it must be exploited with wisdom and conserved for the future.

In our Eden Isle planning and construction we seek such high standards and we pledge to assist in every way toward making the Greers Ferry Lake area one of the nation's very finest.

Herbert J. Thomas

Chairman of the Board, Eden Isle Builders



Eden Isle

a 600-acre planned island community for retirement, vacation

and resort living. A project of the First Pyramid Life Insurance Company.